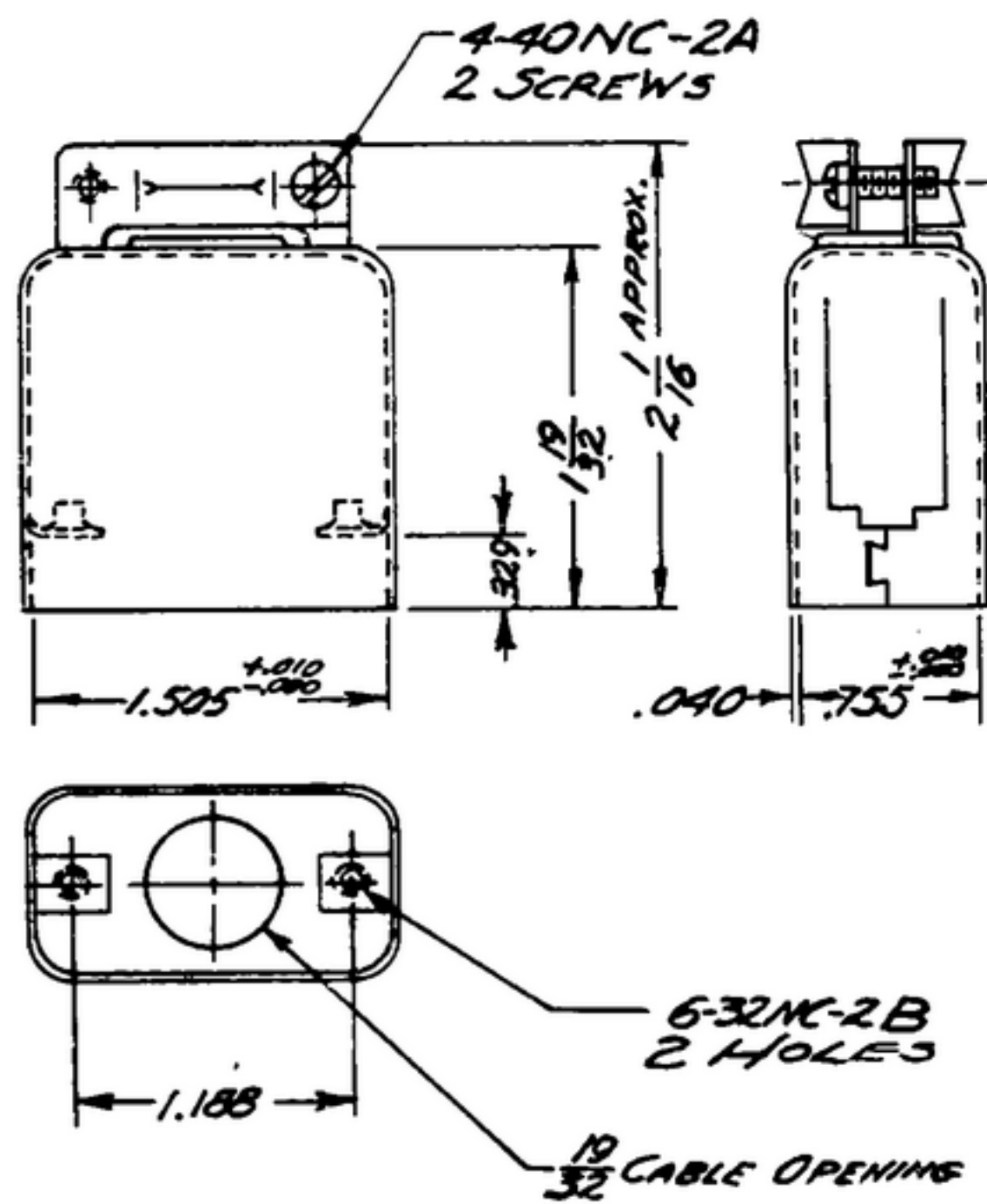


NOTICE: WHEN GOVERNMENT DRAWINGS, SPECIFICATIONS, OR OTHER DATA ARE USED FOR ANY PURPOSE OTHER THAN IN CONNECTION WITH A DEFINITELY RELATED GOVERNMENT PROCUREMENT OPERATION, THE UNITED STATES GOVERNMENT THEREBY INCURS NO RESPONSIBILITY FOR ANY OBLIGATION WHATSOEVER; AND THE FACT THAT THE GOVERNMENT MAY HAVE FORMULATED, FURNISHED, OR IN ANY WAY SUPPLIED THE SAID DRAWINGS, SPECIFICATIONS, OR OTHER DATA IS NOT TO BE REGARDED BY IMPLICATION OR OTHERWISE AS IN ANY MANNER LICENSING THE HOLDER OR ANY OTHER PERSON OR CORPORATION, OR CONVEYING ANY RIGHTS OR PERMISSION TO MANUFACTURE, USE, OR SELL ANY PATENTED INVENTION THAT MAY IN ANY WAY BE RELATED THERETO.

THIS DOCUMENT HAS BEEN PURCHASED BY THE GOVERNMENT AND MAY BE REPRODUCED AND USED IN CONNECTION WITH ANY GOVERNMENT PROCUREMENT OR MAINTENANCE OPERATION.

* FOR INFORMATION ONLY. CONTRACTOR MAY AT HIS OPTION DEVIATE FROM THESE PROCESS DETAILS.

REVISIONS			
SYM	DESCRIPTION	DATE	APPROVAL
SWE APPROVAL			
A ₃	A ₁ -ADDED NOTE 2; A ₂ -WAS 26-961; A ₃ -WAS M262;	15 OCT 59	RTD PME
B ₁	B ₁ -IN NOTE #1, PART NO. 126-932 WAS #26-931	17 MAY 60	RTD PME



NOTES:

1. PART MAY BE NO. 126-932 AS SUPPLIED BY AMERICAN PHENOLIC CORP., CHICAGO, ILL., OR EQUAL, PROVIDING IT MEETS THE FOLLOWING REQUIREMENTS AND DIMENSIONS SHOWN.

DESCRIPTION: COVER ASSY FOR 15 CONTACT PLUS CONNECTOR.
COVER FINISH: E511 PER SPEC MIL-F-14072
CABLE CLAMP SCREWS: STEEL; M262A PER SPEC MIL-F-14072
MATERIAL: ALUMINIUM

2. COVER SHALL MEET THE APPLICABLE REQUIREMENTS OF MIL-C-8324 EXCEPT WHERE AMENDED BY THIS SPECIFICATION.

* WHEN PART NO. APPEARS AS 559 0297 92, MILITARY SOURCE INSPECTION IS REQUIRED.

COLLINS PART NO.	ITEM	REQD	PART NO.	DESCRIPTION	MATL	MATL SPEC
LIST OF MATERIAL						
COLLINS PART NO. 559 0297 002						

DRAWN RAH		CHECKED 		APPROVED		-COLLINS RADIO CO.- -DESAR-RAPID-10WA- 14214-PH 51-93		DEPARTMENT OF THE ARMY SIGNAL CORPS ENGINEERING LABORATORIES FORT MONMOUTH NEW JERSEY	
UNLESS OTHERWISE SPECIFIED: DECIMAL DIMENSIONS INCLUDING HOLE SIZES MAY VARY ±.005 FRACTIONAL DIMENSIONS INCLUDING HOLE SIZES MAY VARY ±1/64 MACHINED ANGLES MAY VARY ±1° SHEARED ANGLES MAY VARY ±.25° BROKEN ANGLES MAY VARY ±1° ECCENTRICITY BETWEEN ANY DIAMETERS ON THE SAME CENTERLINE SHALL NOT EXCEED .010 TOTAL INDICATOR READING. ALL DIMENSIONS ARE FINISH DIMENSIONS INCLUDING APPLIED FINISH AND ARE GIVEN IN INCHES.						SIGNAL CORPS REVIEWED PME APPROVED HLY PME			
5580455-004		1		SM-D-249103		SC-DL-248775		COVER-CONNECTOR	
-COLLINS NO.-		QTY		NEXT ASSY		USED ON			
APPLICATION						DATE JAN 13 56		SCALE 1/1	
								SM-B-283196	